

Diablo Vista Water System

MINUTES

DIABLO VISTA WATER SYSTEM ADVISORY BOARD MEETING

Small Conference Room
100 Gregory Lane, Pleasant Hill, California 94523

December 17, 2013

MEMBERS PRESENT: Don Ortolan Phil Williamson
Leslie Scatena Ron Wi, Sr. Engineer for Mario Moreno
Jack Sciaroni Steve Zalewski

MEMBERS ABSENT: Erich Berthold, Chair

GUEST PRESENT: Jordan Damerel, Environmental Engineer, MWH Global, Inc.

CALL TO ORDER: The meeting was called to order at 6:45 p.m. by Steve Zalewski.

PUBLIC COMMENT: None presented.

OLD BUSINESS:

Minutes of the Previous Meeting:

A motion was made by Jack Sciaroni to approve the Advisory Board Minutes of June 18 and September 17, 2013, and seconded by Steve Zalewski. After a call for discussion and a vote by Steve Zalewski, the motion to approve the Minutes, as written, passed unanimously.

Maintenance Plans and Operational Needs of the System, as well as any Repairs Performed or Scheduled:

Jack reported replacing the oil in the air compressor, adding packing to the pump house and moving the lines out.

Operational Equipment Needs – Review the Needs of the Staff to Ensure the Proper Tools and Equipment are Available to Operate the System Properly:

Jack indicated he will purchase 1” ball valves, and let the Secretary know the cost for proper reimbursement.

Capital Improvement Project – Manifold and Pressure Tank Replacement Project. Update on the Status of the Project by Design Consultant, Jordan Damerel of MWH Global Inc.:

Jordan Damerel, Environmental Engineer with MWH Global, Inc., presented the Advisory Board with 65% of the design drawings for the pump station pipe replacement project, based on his visit to the pump house in November (attached).

After reviewing the design drawings, the Advisory Board requested a few minor changes, and asked Jordan to finalize the drawings for approval in January to begin the bidding process. The goal is to have the project completed by late April, early May, 2014.

It was mentioned that if the final costs exceed \$100,000, the project must go before City Council for approval, and if the final costs fall under \$100,000 the project can be finalized by the end of the first week of January, 2014.

It was decided to hold a special Advisory Board meeting on January 14, at 6:30 p.m. for final review and approval.

NEW BUSINESS:

Review the Number and Nature of Calls Received by Dispatcher for the Period of September 14 to December 17, 2013:

DVWS dispatch received 25 calls for the period September 19-December 17, 2013. 15 inquiries re: shutting system down in November due to allotment requirements not being met; 4 inquiries re: when McKissick/Hubbard will be back on; 2 over use calls; 1 ruptured pipe 1 leak in service pipe; 1 inquiry if water is on; 1 annual fee inquiry.

Water Usage Update – Review the Monthly Allocations and Usage to Date:

Inasmuch as DVWS experienced three negative months during the season, we ended up with a 752,000 gallon surplus at year-end. It was suggested that Leslie contact CCWD to see if there is a way to access DVWS' account and fine tune its usage numbers.

Review Service Agreement Between ControlCo and DVWS for Wireless Remote System:

The Advisory Board reviewed the contract and will negotiate normal business hours and preventative maintenance to see if ControlCo will reduce its annual fee, based on these requested changes.

Review Budget Allocation and Expenditures for Current Fiscal Year:

The Advisory Board approved the budget allocation and expenditures for the current fiscal year.

Approval of Advisory Board meeting stipend distributions for June 18 and September 17, 2013 DVWS Advisory Board meetings:

A motion was made by Jack Sciaroni to approve the Advisory Board stipends of June 18 and September 17, 2013 and seconded by Steve Zalewski. After a call for discussion and a vote by Steve Zalewski, the motion to approve the stipend distributions passed unanimously.

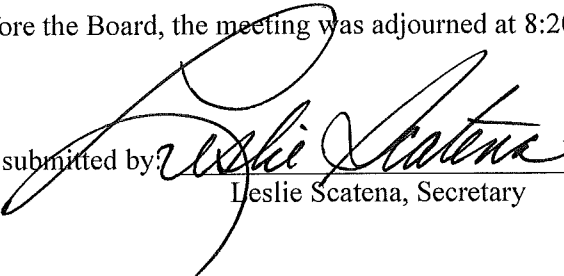
OTHER BUSINESS:

Leslie received a call from CCWD for assistance in providing them with the names and addresses of DVWS users, to address correspondence pertaining to cross-connections, as well as a cross reference tool for CCWD's records, to ensure all DVWS users have backflow protection installed. Ron mentioned he will talk with Janet Coleson, City Attorney for advice.

The next DVWS Advisory Board meeting will be held on Tuesday, March 18, 2014.

There being no further business presented before the Board, the meeting was adjourned at 8:20 p.m.

Respectfully submitted by:



Leslie Scatena, Secretary

City of Pleasant Hill

Diablo Vista Pump Station Pipe Replacement 65% Design Drawings December 2013

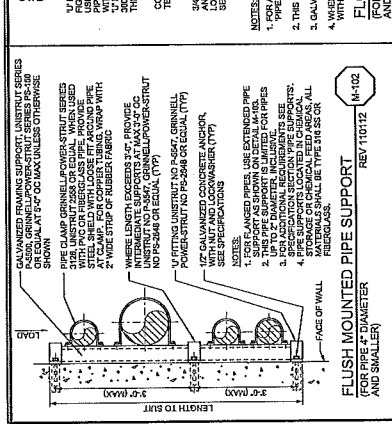
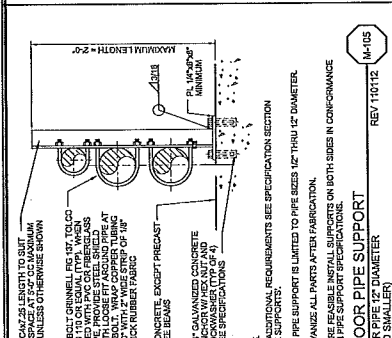
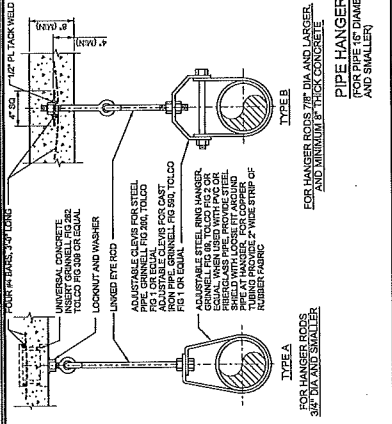
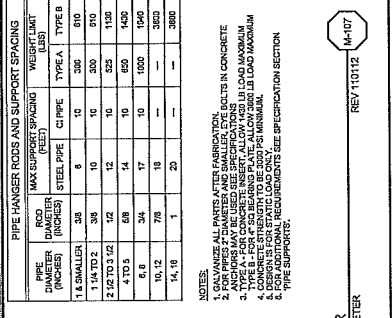
DRAWING LIST

SHEET	DESCRIPTION
0	COVER
1	MECHANICAL DETAILS
2	PIPE SCHEDULE
3	EXISTING PIPING PLAN
4	DEMOLITION PLAN
5	NEW PIPING PLAN
6	NEW PIPING SECTION



				DIABLO VISTA PUMP STATION PIPE REPLACEMENT DESIGN COVER SHEET		SHEET 0
PRELIMINARY DESIGN PHASE NOT FOR CONSTRUCTION This document is an interim document and not suitable for construction. It is subject to change without notice and is not to be used for construction or procurement of materials and is not to be relied upon without the explicit written consent of the proposer.		DESIGNED: _____ DRAWN: _____ CHECKED: _____		WARNING 0 X 1 IF THIS BAR DOES NOT HAVE A WARNING THIS DRAWING IS NOT TO SCALE		Job Number
REV	DATE	BY	DESCRIPTION			

PIPE DIAMETER (INCHES)	PIPE HANGER RODS AND SUPPORT SPACING		WEIGHT LIMIT (LBS)
	MAX SUPPORT SPACING (FEET)	TYPE	
1 & SMALLER	6	TYPE A	500
1 1/4 TO 2	10	TYPE A	500
2 TO 3	12	TYPE A	525
3 TO 4	14	TYPE A	1400
4 TO 5	17	TYPE A	1000
6 TO 8	19	TYPE A	3000
10, 12, 14, 16	22	TYPE B	3000



NOTES:

- FOR ALL PARTS AFTER FABRICATION.
- FOR PIPES 2" DIAMETER AND SMALLER, EYE BOLTS IN CONCRETE SHALL BE 1/2" DIA. STEEL EYE BOLTS WITH 1/2" DIA. CONCRETE INSERT, ALLOW 1/2" IN LOAD MAXIMUM.
- TYPE A - FOR CONCRETE INSERT, ALLOW 1/2" IN LOAD MAXIMUM.
- TYPE B - FOR STEEL EYE BOLTS, ALLOW 1/2" IN LOAD MAXIMUM.
- SECTION IS FOR STATIC LOAD ONLY.
- FOR WIND LOADS, SEE SPECIFICATION SECTION FOR SUPPORTS.

NOTES:

- FOR ALL PARTS AFTER FABRICATION.
- FOR PIPES 2" DIAMETER AND SMALLER, EYE BOLTS IN CONCRETE SHALL BE 1/2" DIA. STEEL EYE BOLTS WITH 1/2" DIA. CONCRETE INSERT, ALLOW 1/2" IN LOAD MAXIMUM.
- TYPE A - FOR CONCRETE INSERT, ALLOW 1/2" IN LOAD MAXIMUM.
- TYPE B - FOR STEEL EYE BOLTS, ALLOW 1/2" IN LOAD MAXIMUM.
- SECTION IS FOR STATIC LOAD ONLY.
- FOR WIND LOADS, SEE SPECIFICATION SECTION FOR SUPPORTS.

NOTES:

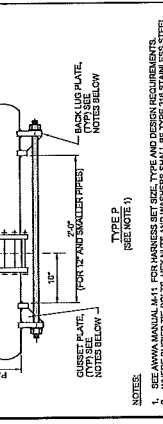
- FOR ALL PARTS AFTER FABRICATION.
- FOR PIPES 2" DIAMETER AND SMALLER, EYE BOLTS IN CONCRETE SHALL BE 1/2" DIA. STEEL EYE BOLTS WITH 1/2" DIA. CONCRETE INSERT, ALLOW 1/2" IN LOAD MAXIMUM.
- TYPE A - FOR CONCRETE INSERT, ALLOW 1/2" IN LOAD MAXIMUM.
- TYPE B - FOR STEEL EYE BOLTS, ALLOW 1/2" IN LOAD MAXIMUM.
- SECTION IS FOR STATIC LOAD ONLY.
- FOR WIND LOADS, SEE SPECIFICATION SECTION FOR SUPPORTS.

NOTES:

- FOR ALL PARTS AFTER FABRICATION.
- FOR PIPES 2" DIAMETER AND SMALLER, EYE BOLTS IN CONCRETE SHALL BE 1/2" DIA. STEEL EYE BOLTS WITH 1/2" DIA. CONCRETE INSERT, ALLOW 1/2" IN LOAD MAXIMUM.
- TYPE A - FOR CONCRETE INSERT, ALLOW 1/2" IN LOAD MAXIMUM.
- TYPE B - FOR STEEL EYE BOLTS, ALLOW 1/2" IN LOAD MAXIMUM.
- SECTION IS FOR STATIC LOAD ONLY.
- FOR WIND LOADS, SEE SPECIFICATION SECTION FOR SUPPORTS.

NOTES:

- FOR ALL PARTS AFTER FABRICATION.
- FOR PIPES 2" DIAMETER AND SMALLER, EYE BOLTS IN CONCRETE SHALL BE 1/2" DIA. STEEL EYE BOLTS WITH 1/2" DIA. CONCRETE INSERT, ALLOW 1/2" IN LOAD MAXIMUM.
- TYPE A - FOR CONCRETE INSERT, ALLOW 1/2" IN LOAD MAXIMUM.
- TYPE B - FOR STEEL EYE BOLTS, ALLOW 1/2" IN LOAD MAXIMUM.
- SECTION IS FOR STATIC LOAD ONLY.
- FOR WIND LOADS, SEE SPECIFICATION SECTION FOR SUPPORTS.



NOTES:

- FOR ALL PARTS AFTER FABRICATION.
- FOR PIPES 2" DIAMETER AND SMALLER, EYE BOLTS IN CONCRETE SHALL BE 1/2" DIA. STEEL EYE BOLTS WITH 1/2" DIA. CONCRETE INSERT, ALLOW 1/2" IN LOAD MAXIMUM.
- TYPE A - FOR CONCRETE INSERT, ALLOW 1/2" IN LOAD MAXIMUM.
- TYPE B - FOR STEEL EYE BOLTS, ALLOW 1/2" IN LOAD MAXIMUM.
- SECTION IS FOR STATIC LOAD ONLY.
- FOR WIND LOADS, SEE SPECIFICATION SECTION FOR SUPPORTS.

NOTES:

- FOR ALL PARTS AFTER FABRICATION.
- FOR PIPES 2" DIAMETER AND SMALLER, EYE BOLTS IN CONCRETE SHALL BE 1/2" DIA. STEEL EYE BOLTS WITH 1/2" DIA. CONCRETE INSERT, ALLOW 1/2" IN LOAD MAXIMUM.
- TYPE A - FOR CONCRETE INSERT, ALLOW 1/2" IN LOAD MAXIMUM.
- TYPE B - FOR STEEL EYE BOLTS, ALLOW 1/2" IN LOAD MAXIMUM.
- SECTION IS FOR STATIC LOAD ONLY.
- FOR WIND LOADS, SEE SPECIFICATION SECTION FOR SUPPORTS.

NOTES:

- FOR ALL PARTS AFTER FABRICATION.
- FOR PIPES 2" DIAMETER AND SMALLER, EYE BOLTS IN CONCRETE SHALL BE 1/2" DIA. STEEL EYE BOLTS WITH 1/2" DIA. CONCRETE INSERT, ALLOW 1/2" IN LOAD MAXIMUM.
- TYPE A - FOR CONCRETE INSERT, ALLOW 1/2" IN LOAD MAXIMUM.
- TYPE B - FOR STEEL EYE BOLTS, ALLOW 1/2" IN LOAD MAXIMUM.
- SECTION IS FOR STATIC LOAD ONLY.
- FOR WIND LOADS, SEE SPECIFICATION SECTION FOR SUPPORTS.

NOTES:

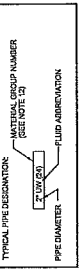
- FOR ALL PARTS AFTER FABRICATION.
- FOR PIPES 2" DIAMETER AND SMALLER, EYE BOLTS IN CONCRETE SHALL BE 1/2" DIA. STEEL EYE BOLTS WITH 1/2" DIA. CONCRETE INSERT, ALLOW 1/2" IN LOAD MAXIMUM.
- TYPE A - FOR CONCRETE INSERT, ALLOW 1/2" IN LOAD MAXIMUM.
- TYPE B - FOR STEEL EYE BOLTS, ALLOW 1/2" IN LOAD MAXIMUM.
- SECTION IS FOR STATIC LOAD ONLY.
- FOR WIND LOADS, SEE SPECIFICATION SECTION FOR SUPPORTS.

NOTES:

- FOR ALL PARTS AFTER FABRICATION.
- FOR PIPES 2" DIAMETER AND SMALLER, EYE BOLTS IN CONCRETE SHALL BE 1/2" DIA. STEEL EYE BOLTS WITH 1/2" DIA. CONCRETE INSERT, ALLOW 1/2" IN LOAD MAXIMUM.
- TYPE A - FOR CONCRETE INSERT, ALLOW 1/2" IN LOAD MAXIMUM.
- TYPE B - FOR STEEL EYE BOLTS, ALLOW 1/2" IN LOAD MAXIMUM.
- SECTION IS FOR STATIC LOAD ONLY.
- FOR WIND LOADS, SEE SPECIFICATION SECTION FOR SUPPORTS.

GENERAL SHEET NOTES

1. PROPRIETARY NAMES HAVE BEEN QUOTED FOR IDENTIFICATION PURPOSES ONLY. SUBSTITUTIONS, CHANGES AND OMISSIONS SHALL BE SUBJECT TO PROVISIONS OF THE SPECIFICATIONS.
2. LEAKAGE ALLOWANCE IS AS FOLLOWS:
 - (A) PIPES SO DESIGNATED SHALL SHOW ZERO LEAKAGE ALLOWANCE.
 - (B) PIPES SO DESIGNATED SHALL SHOW ZERO LEAKAGE ALLOWANCE PER FOUR PER INCH DIAMETER PER 100 FEET OF BURIED PIPE.
 - (C) PIPES SO DESIGNATED SHALL NOT SHOW A LEAKAGE ALLOWANCE OF MORE THAN 0.15 GALLON PER HOUR PER INCH OF DIAMETER PER 100 FEET OF BURIED PIPE.
 - (D) PIPES SO DESIGNATED SHALL NOT SHOW A LOSS OF VACUUM OF MORE THAN 4 INCHES MERCURY PER HOUR.
3. FOR FIELD TEST PROCEDURES AND ADDITIONAL TEST REQUIREMENTS, SEE PIPING SECTION OF SPECIFICATIONS.
4. NO SUBSTITUTIONS UNLESS ACCEPTED BY THE ENGINEER PER THE SPECIFICATIONS.
5. CHANGE IN PIPING MATERIAL GROUP NUMBER IS INDICATED THIS: \rightarrow
6. FOR PIPE LINING AND COATING, SEE SPECIFICATIONS.
7. EXPOSED PIPING SHALL BE PAINTED IN ACCORDANCE WITH SPECIFICATIONS. COLORS TO BE SELECTED BY ENGINEER.
8. FOR VALVE ENDS, SEE SPECIFICATIONS.



PIPE (SEE NOTE 1)	FUNCTION	PIPE MATERIALS (SEE NOTE 1)		FITTINGS		LEAKAGE TEST METHOD (SEE NOTE 2)		
		EXPOSED BURIED (SEE NOTE 2)	4" DIAMETER AND SMALLER	4" DIAMETER AND LARGER	RESISTANCE TEST PER	WATER	WATER	WATER
1	STEEL, ASTM A106, SCH 40, BLACK WELDED	2 1/2" AND SMALLER WELDED OR FLOW WELDED BY A QUALIFIED WELDER. 3" AND LARGER WELDED BY A QUALIFIED WELDER. 4" AND LARGER WELDED BY A QUALIFIED WELDER. WELDED OR FLOW WELDED BY A QUALIFIED WELDER. WELDED OR FLOW WELDED BY A QUALIFIED WELDER. WELDED OR FLOW WELDED BY A QUALIFIED WELDER.	STEEL, ASTM A106, SCH 40, BLACK WELDED	STEEL, ASTM A106, SCH 40, BLACK WELDED	RESISTANCE TEST PER	WATER	WATER	WATER
2	STEEL, ASTM A106, SCH 40, BLACK WELDED, GALVANIZED	2 1/2" AND SMALLER WELDED OR FLOW WELDED BY A QUALIFIED WELDER. 3" AND LARGER WELDED BY A QUALIFIED WELDER. 4" AND LARGER WELDED BY A QUALIFIED WELDER. WELDED OR FLOW WELDED BY A QUALIFIED WELDER. WELDED OR FLOW WELDED BY A QUALIFIED WELDER. WELDED OR FLOW WELDED BY A QUALIFIED WELDER.	STEEL, ASTM A106, SCH 40, BLACK WELDED, GALVANIZED	STEEL, ASTM A106, SCH 40, BLACK WELDED, GALVANIZED	RESISTANCE TEST PER	WATER	WATER	WATER
3	WELDED STEEL, AWWA C200, UNPAINTED	WELDED STEEL, AWWA C200, UNPAINTED	WELDED STEEL, AWWA C200, UNPAINTED	WELDED STEEL, AWWA C200, UNPAINTED	RESISTANCE TEST PER	WATER	WATER	WATER

GROUP NUMBER	DESCRIPTION	LEAKAGE TEST METHOD (SEE NOTE 2)
1	STEEL, ASTM A106, SCH 40, BLACK WELDED	RESISTANCE TEST PER
2	STEEL, ASTM A106, SCH 40, BLACK WELDED, GALVANIZED	RESISTANCE TEST PER
3	WELDED STEEL, AWWA C200, UNPAINTED	RESISTANCE TEST PER

CAUTION: FLAMMABLE, LUBRICATED FLUIDS. NOTIFICATION P13-143

REV	DATE	BY	DESCRIPTION

SCALE: NO SCALE

WARNING: NOT FOR CONSTRUCTION

DESIGNED: _____ DRAWN: _____ CHECKED: _____

PRELIMINARY DESIGN PHASE

NOT FOR CONSTRUCTION

This document is an interim document and not suitable for construction. As an interim document, it may contain errors and omissions. It is the responsibility of the user to verify the information contained herein against the original design documents.

City of Pleasant Hill
Pleasant Hill Water System

MWH

DUALD VETA PUMP STATION PIPE REPLACEMENT DESIGN

GENERAL MECHANICAL PIPE SCHEDULE

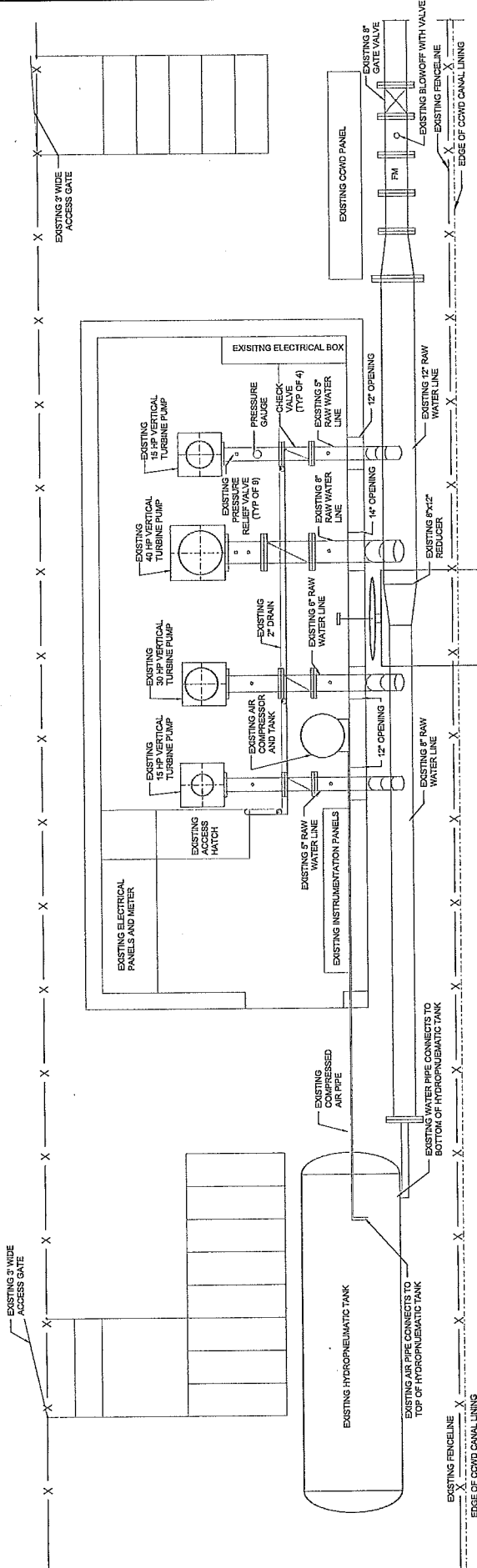
SHEET 2

Job Number

GENERAL SHEET NOTES

1. NOT ALL PRESSURE RELIEF VALVE PIPING IS SHOWN FOR CLARITY. CONTRACTOR SHALL FIELD INVESTIGATE AND VERIFY ALL EXISTING PIPING AND EQUIPMENT.
2. SEE SHEET 4 FOR DEMOLITION PLAN.

- CONTRA COSTA CANAL TRAIL -



REV	DATE	BY	DESCRIPTION

SCALE	1/2" = 1'
WARNINGS	0 / 2
DESIGNED	J. DAMBREL
DRAWN	B. WUBERT
CHECKED	S. HUNDAIL

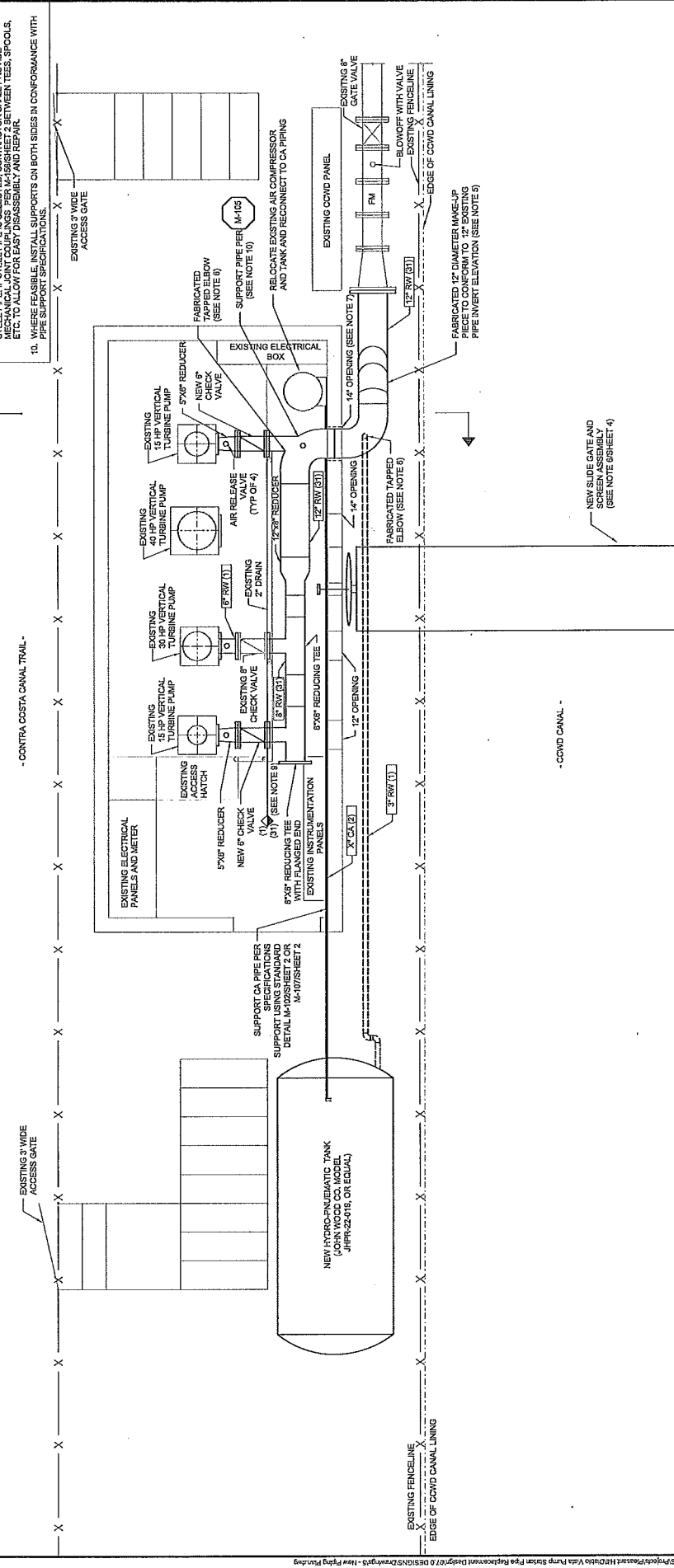
PRELIMINARY DESIGN PHASE	NOT FOR CONSTRUCTION
This document is an initial document and not suitable for construction. As an initial document, it may or may not be related to the project without the express written consent of the proponent.	

City of Pleasant Hill	City of Pleasant Hill
Diablo Vista Water System	Diablo Vista Water System
MWH	MWH
Diablo Vista Water Treatment Plant Pipe Replacement Design	Diablo Vista Water Treatment Plant Pipe Replacement Design
MECHANICAL	MECHANICAL
EXISTING PIPING PLAN	EXISTING PIPING PLAN

SHEET	3
Johannur	Johannur

GENERAL SHEET NOTES

- CONTRACTOR SHALL VERIFY FLANGE BOLT PATTERN OF EXISTING STEEL PIPING AND COORDINATE WITH FLANGES OF NEW PIPING.
- CONTRACTOR SHALL FIELD VERIFY ALL DIMENSIONS PRIOR TO FABRICATION OF PIPING.
- CONTRACTOR SHALL BE RESPONSIBLE FOR DESIGN OF HYDRO-PNEUMATIC TANK ANCHORAGE AND PAD FOOTINGS AND SHALL SUBMIT SEISMIC CALCULATIONS TO OWNER FOR REVIEW AND APPROVAL PRIOR TO INSTALLATION.
- CONTRACTOR SHALL PROTECT EXISTING COWD CANAL AND MAINTAIN EBRPD TRAIL FOR PUBLIC USE AT ALL TIMES AND SHALL OBTAIN ALL NECESSARY ACCESS PERMITS FROM THOSE AGENCIES PRIOR TO START OF CONSTRUCTION.
- CONTRACTOR TO FIELD VERIFY ELEVATIONS OF NEW AND EXISTING PIPING AND FABRICATE MAKE-UP PIECES TO CONFORM TO EXISTING PIPE INVERT ELEVATION. VERIFY LOCATION OF 1/2" PROOF TO FABRICATION.
- CONTRACTOR SHALL WIDEN OPENING AS REQUIRED FOR PIPING PENETRATION. DO NOT CUT REBAR IN EXISTING WALL.
- EXISTING OPENINGS THAT ARE NO LONGER USED SHALL BE SOLIDLY GROUTED.
- CONTRACTOR HAS THE OPTION TO INSTALL PIPE MANHOLE IN AWWA C200 STEEL PIPE. IF STEEL PIPE IS SELECTED, CONTRACTOR SHALL PROVIDE ALL NECESSARY REINFORCEMENT AND ANCHORAGE BETWEEN TEES, SPOOLS, ETC. TO ALLOW FOR EASY DISASSEMBLY AND REPAIR.
- WHERE FEASIBLE, INSTALL SUPPORTS ON BOTH SIDES IN CONFORMANCE WITH PIPE SUPPORT SPECIFICATIONS.

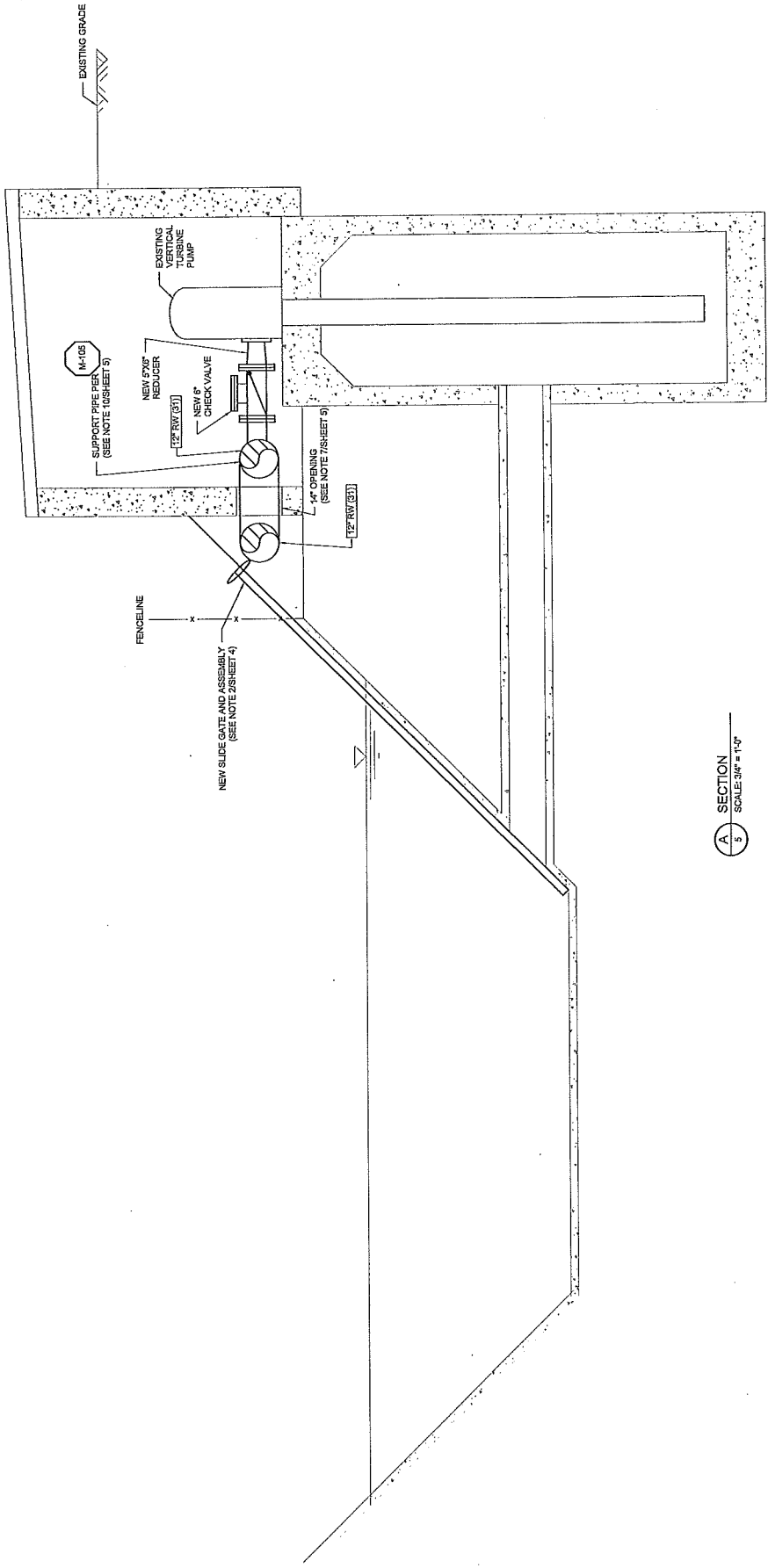


REV	DATE	BY	DESCRIPTION

SCALE	1/2" = 1'
WARNING	IF THIS BAR CODES ARE NOT TO SCALE, THESE DRAWINGS IS NOT TO SCALE
DESIGNED	J. LAMBERL
DRAWN	A. WRIGHT
CHECKED	S. INLAND

PRELIMINARY DESIGN PHASE	
NOT FOR CONSTRUCTION	
This document is an interim document and not suitable for construction. It is provided for information only and its use is to be limited upon without the express written consent of the provider.	

City of Pleasant Hill Diablo Vista Water System	
MWH	
DIABLO VISTA PUMP STATION PIPE REPLACEMENT DESIGN	
MECHANICAL NEW PIPING PLAN	SHEET 5



A SECTION
SCALE: 3/4" = 1'-0"

REV	DATE	BY	DESCRIPTION

SCALE	3/4" = 1'-0"
WARNING	IF THIS DRAWING IS NOT MEASURED TO SCALE, IT IS NOT TO SCALE
DESIGNED	.../.../...
DRAWN	.../.../...
CHECKED	.../.../...

PRELIMINARY DESIGN PHASE	NOT FOR CONSTRUCTION
This document is an interim document and not suitable for construction. As an interim or preliminary drawing, it is not to be relied upon without the express written consent of the engineer.	

City of Pleasant Hill Double Water System	MWH
DANIEL VISTA PUMP STATION PIPE REPLACEMENT DESIGN	MECHANICAL NEW PIPING SECTION

SHEET	8
JOB NUMBER	